

**ARSD Antibody (C-term)**  
**Affinity Purified Rabbit Polyclonal Antibody (Pab)**  
**Catalog # AP16668B****Specification**

---

**ARSD Antibody (C-term) - Product Information**

Application	WB,E
Primary Accession	<a href="#">P51689</a>
Other Accession	<a href="#">NP_001660.2</a> , <a href="#">NP_033667.2</a>
Reactivity	Human
Host	Rabbit
Clonality	Polyclonal
Isotype	Rabbit IgG
Calculated MW	64860
Antigen Region	502-532

**ARSD Antibody (C-term) - Additional Information****Gene ID** 414**Other Names**

Arylsulfatase D, ASD, 316-, ARSD

**Target/Specificity**

This ARSD antibody is generated from rabbits immunized with a KLH conjugated synthetic peptide between 502-532 amino acids from the C-terminal region of human ARSD.

**Dilution**

WB~~1:1000

E~~Use at an assay dependent concentration.

**Format**

Purified polyclonal antibody supplied in PBS with 0.09% (W/V) sodium azide. This antibody is purified through a protein A column, followed by peptide affinity purification.

**Storage**

Maintain refrigerated at 2-8°C for up to 2 weeks. For long term storage store at -20°C in small aliquots to prevent freeze-thaw cycles.

**Precautions**

ARSD Antibody (C-term) is for research use only and not for use in diagnostic or therapeutic procedures.

**ARSD Antibody (C-term) - Protein Information****Name** ARSD**Cellular Location**

Lysosome.

#### **Tissue Location**

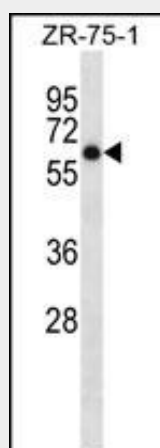
Expressed in the pancreas, kidney, liver, lung, placenta, brain and heart

#### **ARSD Antibody (C-term) - Protocols**

Provided below are standard protocols that you may find useful for product applications.

- [Western Blot](#)
- [Blocking Peptides](#)
- [Dot Blot](#)
- [Immunohistochemistry](#)
- [Immunofluorescence](#)
- [Immunoprecipitation](#)
- [Flow Cytometry](#)
- [Cell Culture](#)

#### **ARSD Antibody (C-term) - Images**



ARSD Antibody (C-term) (Cat. #AP16668b) western blot analysis in ZR-75-1 cell line lysates (35ug/lane). This demonstrates the ARSD antibody detected the ARSD protein (arrow).

#### **ARSD Antibody (C-term) - Background**

The protein encoded by this gene is a member of the sulfatase family. Sulfatases are essential for the correct composition of bone and cartilage matrix. This encoded protein is postrationally glycosylated and localized to the lysosome. Two transcript variants encoding different isoforms have been found for this gene.

#### **ARSD Antibody (C-term) - References**

Urbitsch, P., et al. DNA Cell Biol. 19(12):765-773(2000)  
Dooley, T.P., et al. Biochem. Biophys. Res. Commun. 277(1):236-245(2000)  
Meroni, G., et al. Hum. Mol. Genet. 5(4):423-431(1996)  
Franco, B., et al. Cell 81(1):15-25(1995)